



connexions

Large Firm Resources. Personal Attention.sm

ROWE Says Final Farewell to Founder David T. Rowe, PS, PE



David Rowe

With heavy hearts, we said a final goodbye to company founder David T. Rowe, PS, PE. He died July 16 at the age of 86 after a battle with cancer. Dave’s ingenuity, tenacity, and strong ethical commitment built the foundation of this once family-owned business. That foundation allowed the transition into a true corporate structure that has enabled us to become the 140+ members-strong multi-disciplined firm we are today, and we are forever grateful.

Dave was a native of the Flint area and remained a strong advocate for improving the quality of life in our region throughout his career. After graduating from Michigan Technological University, Dave did design work while serving in the U.S. Army, then worked for a few years for another local engineering firm before founding Rowe Engineering Inc. in Flushing, MI in 1962. He was a licensed engineer and surveyor, and in the late 1960s, when Michigan became only the second state to register professional community planners, Dave was one of the first to receive his certification.

Dave believed, practiced, and taught that engineers and surveyors are responsible for doing what is best for their clients. He also believed in taking the long view of a project to gauge how it would impact the community as a whole.

He used innovative ways to remove barriers between professions so his staff could work effectively as a team. It was common practice for him to assign graduate engineers to work with survey crews so they could learn firsthand how the crews gathered the information required by the engineers, minimizing miscommunication between the two groups.

Dave encouraged staff to become involved in professional and community organizations. He provided practical examples of this leadership, ranging from serving as president of the American Council of Engineering Companies Michigan Board of Directors to trustee on his local school board.

Dave retired from ROWE in 1992, then went on to work with one of his daughters to establish another company located in Traverse City. He eventually fully retired to enjoy time with his family in beautiful northern Michigan.

It is our hope we can continue Dave’s legacy by remaining a successful, professional, ethical, client and community-focused company for decades to come.



Above, current and former ROWE principals show that even as leaders, they never stopped being hands-on. From left is Robert E. Mark; David T. Rowe, PE, PS; William J. Winiarski, PE, PS; James E. Redding, PE, LEED® AP; and John D. Matonich, PS.

Table of Contents:

Lapeer’s Reconstructed Oregon Street Provides a Smooth Ride2	Prospect and Tietz Streets Projects Ease Lives of Many5
Farmington Hills, MI Office Doubles Staff Since Opening in 20132	Innovative County Bridge Receives Accolades5
Bridge Provides Safer Travel Option for Alma Pedestrians2	Former ROWE CEO Named Citizen Year for Supporting Community..6
Clients Awarded \$900K in Scrap Tire Grants3	Project Engineer Honored with Award for Being an Emerging Leader..6
Improvements Completed in One Year for Large Regional Attraction . .3	Survey Office Technician Wins Awards for Stellar Mapping Skills6
Let LiDAR Speed Up Your Project4	Staff Updates7
Fall Free Education Series Expands4	Did You Know that ROWE8

Find us on the Web

www.RowePSC.com



Lapeer's Reconstructed East Oregon Street Provides a Smooth Ride

ROWE completed design and construction engineering for the reconstruction of approximately 2,050 feet of East Oregon Street in the City of Lapeer, MI. The project included new 16-inch diameter water main, sanitary sewer, storm sewer, and underdrains. It also included new curb and gutter, drive approaches, sidewalk repair, and ADA sidewalk ramps. Pictured from left, a view of a segment of the project prior to work then a view of the same area after work was completed.



Farmington Hills, MI Office Doubles Staff Since Opening in 2013

ROWE's presence in southeast (SE) Michigan is growing. Since opening an office in Farmington Hills in 2013, the number of personnel in the office has doubled. Several members of ROWE's Civil Utilities Division and Construction Services Division are based in the office, located at 27260 Haggerty Road Suite A-7, but our surveyors, landscape architects, and planners join them as needed.

Our SE Michigan clients range from small municipalities to county departments and MDOT TSCs. Since the office is conveniently located off I-696 and M-5 and many staff live in SE Michigan communities, we can quickly respond to client needs during projects.

If you have a SE Michigan project you'd like to discuss, please contact Senior Project Manager Steven J. Magnan, PE, at (248) 675-1096 or SMagnan@rowepsc.com.

Bridge Provides Safer Travel Option for Alma Pedestrian Traffic



ROWE designed a bridge for the City of Alma, MI spanning 153 feet for pedestrians to use as an alternative to a nearby bridge for vehicular traffic. The pedestrian bridge over the Pine River connects a park to a network of pathways. Along with the bridge, ROWE designed sidewalk and pathway extensions, a kayak/canoe launch, a new parking lot, and restroom facility in Alma — all funded by a Michigan Department of Natural Resources grant.

Clients Awarded \$900K in Scrap Tire Grants

ROWE prepared successful applications for six clients to receive funds from the Michigan Department of Environmental Quality's "2015-16 Scrap Tire Market Development" grants. The Village of Birch Run and cities of Caro, Clio, Flushing, Lapeer, and St. Clair are on their way to paving or repairing a total of 24 streets with the assistance of \$913,149 in grant money. ROWE is providing design for a majority of these clients' projects. Construction is slated for fall 2016 or spring 2017.

Scrap Tire Market Development grant applications are due at the end of each year and awarded in early summer the following year. They provide up to a 50-percent match for communities to complete paving or pavement repair projects with bituminous asphalt containing ground tires.

If you would like more information about how ROWE can help you apply for these grants, contact your project manager or ROWE Project Manager Louis P. Fleury, PE, at (800) 837-9131 or LFleury@rowepsc.com.

Using rubber-modified asphalt in construction and repairs instead of traditional asphalt:

- Produces pavement that lasts longer
- Reduces noise
- Provides better skid control
- Reduces landfill waste

Improvements Completed in One Year for Large Regional Attraction

A fast-track improvement project at Lakeside Park in the City of Port Huron, MI has restored luster to what the city claims is its "crown jewel." Located on the shores of Lake Huron, the park attracts 3,000-5,000 people each summer weekend and until the \$500K improvements were unveiled in May, no updates had been made to it since the early 1980s.

In March 2015, ROWE began an expedited four-month design for the updates, including the following.

- Replacement of an aged restroom/concession building with an angled building that reduces potential for crime and includes accessible changing areas and bathrooms for the park
- Construction of a universally-accessible splash pad incorporating replicas of local features, (e.g. lighthouse and the Bluewater Bridge)
- Construction of a police substation
- Creation of universally-accessible beach showers, drinking fountain, beach access, and lake front overlook

ROWE also assisted the city with oversight of the restroom/concession building demolition, coordinated the design/build for the splash pad, and obtained the necessary Michigan Department of Environmental Quality / U.S. Army Corps of Engineers joint permit due to the project's close proximity to the lake front. Ehresman Associates, Inc. was the architect for the project.

The improvements were completed using private dollars, city funding, and a Michigan Department of Natural Resources Trust Fund Grant.

"With the improvements that have been made, it has made Lakeside not only a resident hot spot but a visitors' destination."
Nancy Winzer, City of Port Huron Parks & Recreation Director



Above, from left, people use the new universal access boardwalk; children frolic on the new splash pad; and an aerial view of the site.

Let LiDAR Speed Up Your Project

The laser scanning system known as LiDAR (Light Detection And Ranging) has provided a unique method for acquiring 3D data in the field and can be used for most design applications. This method allows data acquisition to occur under almost any weather condition, which allows for greater flexibility in scheduling. Turnaround time of the completed mapping products is typically less than other methods of data collection.

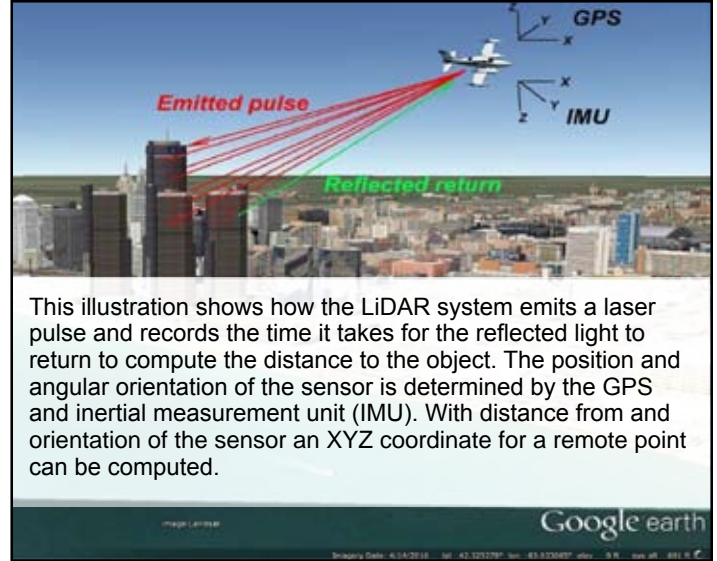
ROWE provides LiDAR post-processing services for all three of its formats: Mobile Laser Scanning, Stationary Terrestrial Laser Scanning, and Aerial Laser Scanning.

Fast 3D collection of accurate and high-resolution data can provide the base mapping for a variety of applications: roadways, rail corridors, waterways, mines and quarries, ports and harbors, forest and agriculture, as well as urban and rural development.

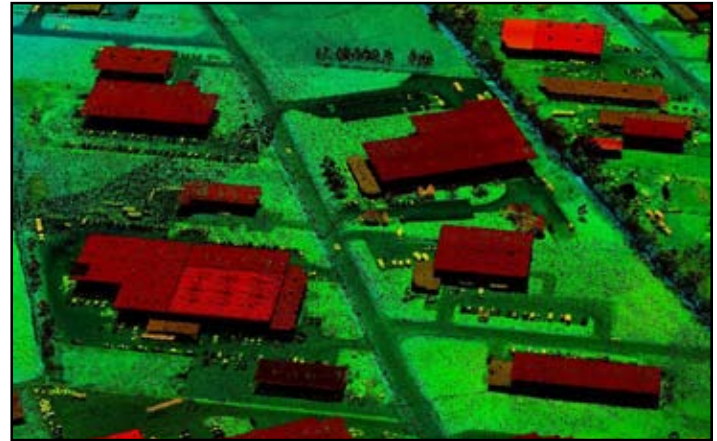
It's beneficial to use LiDAR to:

- Increase safety (surveyors are not on roads, construction areas)
- Expedite the schedule (one collection event, many compilers)
- Map overhead objects (trees, wires, signs, utility structures)
- Map objects that can't be easily measured using traditional survey instruments (trees, buildings, facades, tunnels, bridges)
- Map large areas impractical to map from the ground
- Conquer difficult terrain (swamps/drains, quarries/mines inaccessible to surveyors)
- Create 3D visualization
- Have the convenience of scanning once and extracting measurements at any time

If you are interested in applying this technology to your project, contact ROWE Project Manager Gregory N. Lemke, CP, at (800) 837-9131 or GLemke@rowepsc.com.



This illustration shows how the LiDAR system emits a laser pulse and records the time it takes for the reflected light to return to compute the distance to the object. The position and angular orientation of the sensor is determined by the GPS and inertial measurement unit (IMU). With distance from and orientation of the sensor an XYZ coordinate for a remote point can be computed.



LiDAR measurements are displayed as point data in CAD software where all points have location and elevation. All of the points in a measurement set make up the "point cloud." The above example is of a commercial/industrial park.

Fall Free Education Series Expands

ROWE has two FREE two-hour training sessions in the works for this fall.

- The Survey Department staff is currently formulating a presentation based on the above topic about LiDAR and how it can be utilized to assist with projects. The information will be useful for private and public entities. Details are coming soon.
- The Planning Department staff is currently formulating a presentation that will include a variety of ways to provide public engagement opportunities during the planning process. The program will be an excellent opportunity for planning commissioners, local elected officials, and government officials. Details are coming soon.

Don't Miss These Opportunities

For times, dates, and other details, check www.rowepsc.com in September and/or email NBrand@rowepsc.com to get on the mailing list.

Prospect and Tietz Streets Projects Ease Lives of Many

While the Village of Armada, MI was happy to receive funding from the MDOT Local Bridge Program to rehabilitate the Prospect Street Bridge, they knew the ability to accomplish one project actually required them to complete two projects. Prospect Street connects to Tietz Street on the west end. However, the existing bridge on Tietz Street closed several years ago making Prospect a dead-end street. So if the Prospect Street bridge over the east branch of Coon Creek was removed, its residents would not have access to their homes.

MDOT agreed to fund the culvert replacement on Tietz Street as part of the project. In late July 2015, the contractors began the project by removing and replacing the Tietz Street culvert, which also included replacing the water main in the existing concrete culvert. Once Tietz Street was reconnected to Prospect Street, the contractor proceeded with removing and replacing the components of the Prospect Street bridge.

The project was completed and opened to traffic in late fall 2015.

ROWE completed the following.

- Construction observation
- Construction staking
- Material testing
- Construction engineering
- Office technician services to complete all required MDOT documentation



Above, left, construction commences on Prospect Street bridge, which involved removing existing approaches, railing, decking and beams, and constructing all new components. Above, right is the new bridge.

Innovative County Bridge Receives Accolades

The Babcock Road bridge replacement project completed for the Sanilac County Road Commission received an honorable mention award from the Conference of Minority Transportation Officials-Michigan Chapter's Innovative Transportation Design contest. Galvanized steel beams were utilized on the 56-foot-long structure because the galvanized coating is anticipated to last at least 60 years versus the 20-year maintenance painting cycle of a traditional painted-steel superstructure.

ROWE completed topographic and hydraulic surveys, creek hydraulics, and the production of TS&L, preliminary, and final plans, specifications, and estimates for the project.



Above and at left are two views of the new Babcock Road Bridge.

Former CEO Named Citizen of Year for Supporting the Community

ROWE's former CEO John D. Matonich, PS, was named C.S. Mott Citizen of the Year by the Flint and Genesee Chamber of Commerce. The award is named after Charles Stuart Mott, who was one of the original General Motors Corporation partners and a great supporter of improving the quality of life for all people in Genesee County and beyond. John received the award due to his significant contributions to the advancement and well-being of the community.

John is a past president and former director of the Flint and Genesee Chamber of Commerce. Through the years, he has given his time to such organizations as the Michigan Department of Natural Resources and Environment Natural Resources Commission, curriculum advisory committees for Michigan Technological University and Ferris State University, Baker College of Flint Board of Regents, Lapeer Economic Development Corporation, Lapeer Downtown Development Authority, Davison Chamber of Commerce, Burton Rotary Club, Mott Community College Foundation Board, IMA Recreation Association, Food Bank of Eastern Michigan, and the Hundred Club of Flint.

John is continuing his involvement in some of those organizations as well as finding new ways to give back to the community during his retirement in Gogebic County in Michigan's Upper Peninsula.



J. Matonich

Project Engineer Honored with Award for Being an Emerging Leader

ROWE Project Engineer Deveron Q. Sanders, PE, received the Emerging Leader award from the Conference of Minority Transportation Officials (COMTO) due to his outstanding contributions to the transportation industry. He was selected from a group of nominees across the nation for award.

The COMTO judges chose Deveron for the award because throughout his affiliation with the organization, which includes serving on five Michigan chapter committees, he has demonstrated extraordinary competence in his field by developing and improving his leadership skills and possessing a strong commitment to the transportation field and community. He has implemented self-improvement initiatives and positively impacted and influenced others. They believe with his leadership, he has also demonstrated a commitment to COMTO's vision, which is to ensure a level playing field and maximum participation in the transportation industry for minority individuals, businesses, and communities of color through advocacy, information sharing, training, education, and professional development.

Deveron is a University of Michigan graduate who joined ROWE in 2012 with 10 years of experience. He assists with the design and construction engineering for various road and infrastructure projects.



D. Sanders

Survey Office Technician Wins Awards for Stellar Mapping Skills

ROWE Survey Office Technician II Jason H. Plummer received two awards from the International Right of Way Association (IRWA) for a baseline monument drawing of Consumers Energy's Karn Weadock Next Generation Plant in Hampton Township, MI. IRWA awarded Jason first place in the "Other" category of the Map Competition and chose his map as "Best of Show."

Jason is a 21-year ROWE employee whose responsibilities include processing field data, creating construction staking files, and creating survey drawings.

This is the third consecutive year Jason has received IRWA Map Competition awards and the third time his maps were chosen as Best of Show.

IRWA is an organization of approximately 10,000 members who hail from more than 15 countries and focus on training and professional development. The association serves professionals ranging from surveyors to appraisers whose work relates to the industry of acquiring, managing, and transferring the land rights needed for building and maintaining energy and transportation infrastructure.



ROWE CEO Leanne H. Panduren, PE, presents one of the plaques to Jason.

Staff Updates

Staff Promotions Announced

- **Nathan G. Whiting, PE**, a member of the Construction Services Division, was promoted from senior project engineer to project manager.
- **Troy R. Grunder, PE**, a member of the Civil Utilities Division, was promoted from project engineer to senior project engineer.
- **Jonathan A. Lane**, a member of the Construction Services Division, was promoted from assistant project engineer to project administrator.
- **Brian M. Sarkella, PE**, a member of the Civil Utilities Division, was promoted from assistant project engineer to project engineer.
- **Alexander J. Temple, PE**, a member of the Civil Utilities Division, was promoted from assistant project engineer to project engineer.
- **Danielle N. Walley, EIT**, a member of the Civil Utilities Division, was promoted from graduate engineer to assistant project engineer.
- **Ashley Smokoska, EIT**, a member of the Civil Utilities Division, was promoted from graduate engineer to assistant project engineer.
- **Raymond A. Farr, CST III**, a member of the Survey Department, was promoted from survey field technician II to survey field technician III.



N. Whiting



T. Grunder



J. Lane



B. Sarkella



A. Temple



D. Walley



A. Smokoska



R. Farr

ROWE Welcomes New Staff Members

- **Norman J. Bass** joined ROWE as a senior engineering technician in the Construction Services Division in the Flint, MI corporate office. He has a B.S. in business from Wayne State University and experience gained as an intern with ROWE and more than 40 years in the construction industry.
- **Tina M. Carlock** joined ROWE as a receptionist in the Flint, MI corporate office. She has more than 15 years' administrative experience.
- **Evan M. Grzecki** joined ROWE as a graduate engineer in the Land Development Division in the Flint, MI corporate office. He has a B.S. in civil engineering from Michigan Technological University and experience as an intern with ROWE and as a field engineer for another company.
- **Antonio L. Hamilton** joined ROWE as a graduate engineer in the Transportation Division in the Flint, MI corporate office. He has a B.S. in civil engineering from Michigan State University and one year of experience gained as a co-op engineering technician for another company.
- **Adam M. Hanna** joined ROWE as a senior engineering technician in the Construction Services Division in the Farmington Hills, MI office. He has an A.A.S. in concrete technology from Alpena Community College and 20 years' experience in the construction engineering industry.
- **Dwight A. Hergert** joined ROWE as an engineering technician I in the Construction Services Division in the Flint, MI corporate office. He has an A.S. degree in general education from Mott Community College.
- **David P. Jones** joined ROWE as an engineering technician III in the Construction Services Division in the Farmington Hills, MI office. He has more than 25 years' experience in road and site work and paving and underground field work.
- **Steven M. Marble** rejoined ROWE as a senior engineering technician in the Transportation Division in the Flint, MI corporate office. He has more than a decade of experience, including nearly 10 years of previous employment at ROWE.
- **Caitlyn L. McGoldrick** joined ROWE as a graduate planner in the Planning Department in the Flint, MI corporate office. She has a B.S. in urban and regional planning from Eastern Michigan University and experience gained from interning at ROWE and a Michigan city and township.
- **James D. Robert** rejoined ROWE as a senior engineering technician in the Construction Services Division in the Flint, MI corporate office. He has more than three decades of experience, including nearly 22 years of previous employment at ROWE.
- **Mark S. Sieting** joined ROWE as a senior engineering technician in the Construction Services Division in the Grayling, MI office. He has an A.A.S. in concrete technology from Alpena Community College and more than 30 years' engineering technician experience.



Did You Know that ROWE...

- Is a 54-year-old company
- Has seven offices
- Employs 36 professional engineers
- Has 11 professional surveyors on staff
- Employs three certified photogrammetrists
- Has one licensed landscape architect on staff
- Employs one planner certified by the American Institute of Certified Planners
- Has approximately 90 additional support staff
- Is prequalified in 36 Michigan Department of Transportation classifications
- Has staff licensed to work in 21 states



Contact Us

Corporate Office: 540 S. Saginaw St., Ste. 200, Flint, MI 48502, (810) 341-7500

Lapeer: 128 N. Saginaw St., Lapeer, MI 48446, (810) 664-9411

Mt. Pleasant: 127 S. Main St., Mt. Pleasant, MI 48858, (989) 772-2138

Farmington Hills: 27260 Haggerty Rd., Ste. A-7, Farmington Hills, MI 48331, (248) 675-1096

Lansing: 1000 S. Washington Avenue, Suite 104, Lansing, MI 48910, (800) 837-9131

Grayling: 403 Huron St., Grayling, MI 49738, (989) 348-4036

Tri-Cities: 419 N. Madison Ave., Bay City, MI 48708, (989) 894-4001

Myrtle Beach: 511 Broadway St., Myrtle Beach, SC 29577, (843) 444-1020

Air-Land Surveys: 540 S. Saginaw St., Ste. 200, Flint, MI 48502, (810) 762-6800

If you don't have a ROWE project manager and would like more information about our services, contact Director of Corporate Marketing Jack T. Wheatley, PE, at JWheatley@rowepsc.com or (800) 837-9131.